

Hondex and Bottom Hardness Recording with Time Zero Professional.

Instruction for using Hondex HDX121, 7300DI, and 1500DI sounders with TimeZero Professional 4's bottom hardness. These three Hondex sounders join much more expensive sounders from other brands.

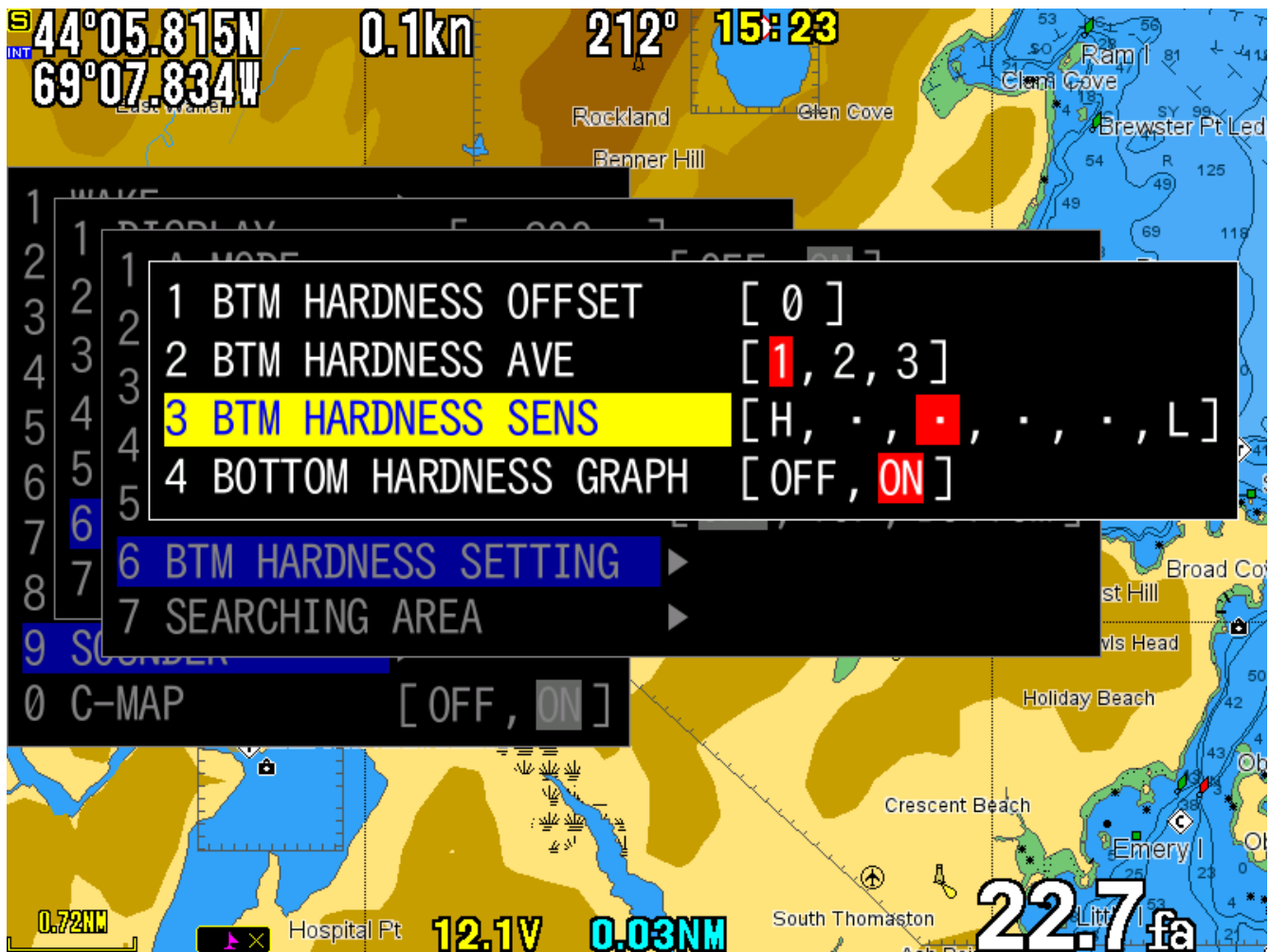
The benefits of using a computer to record depth and hardness information are:

Nearly unlimited storage capacity

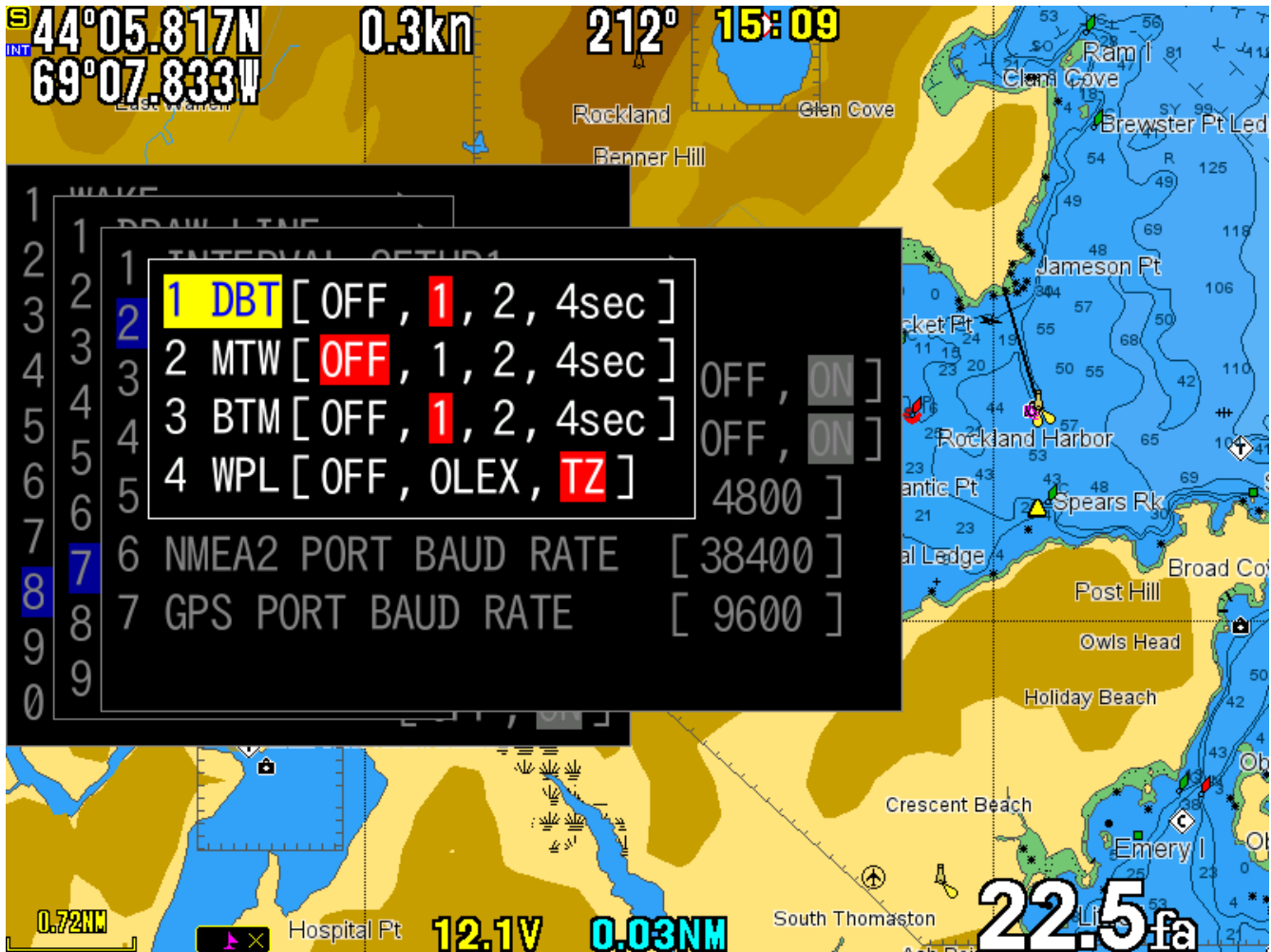
Ability to change color schemes and visualization settings for recorded data.

To start recording Hardness, TimeZero Professional version 4 with PBG has an optional \$500 hardness module to enable hardness recording. The Hondex should have software from mid-2018 (1.36) or later. Please budget for an hour or two of the time to go putt around in the boat setting hardness sensitivity.

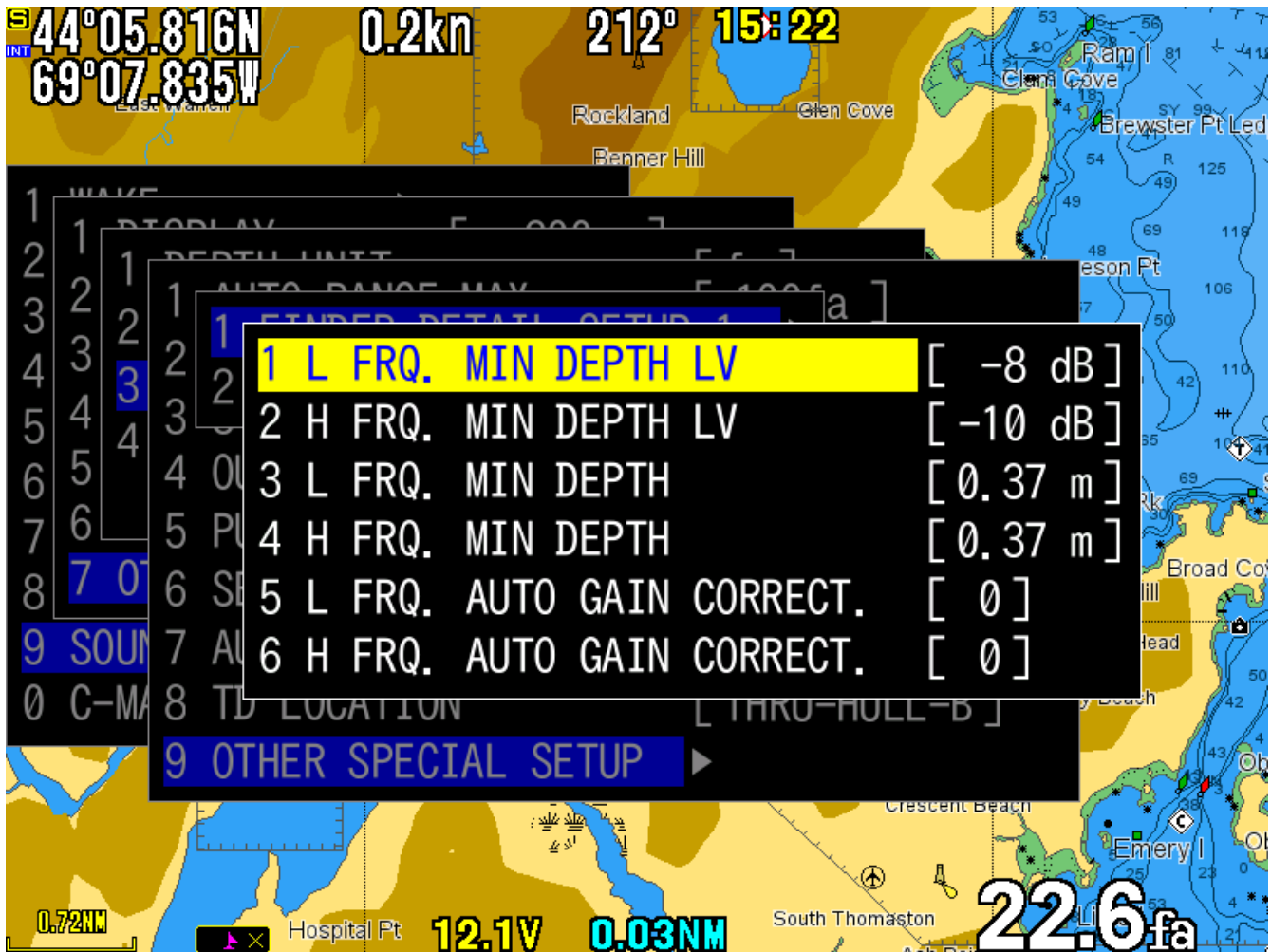
Below is a screenshot of the Hondex hardness sensitivity adjustment area. Short instruction is to go over some hard and very soft bottom in the boat and tune this to make the Hondex's hardness graph look good over some different bottom. it is also helpful in shallow water to reduce sensitivity a little bit; part of our normal setup...



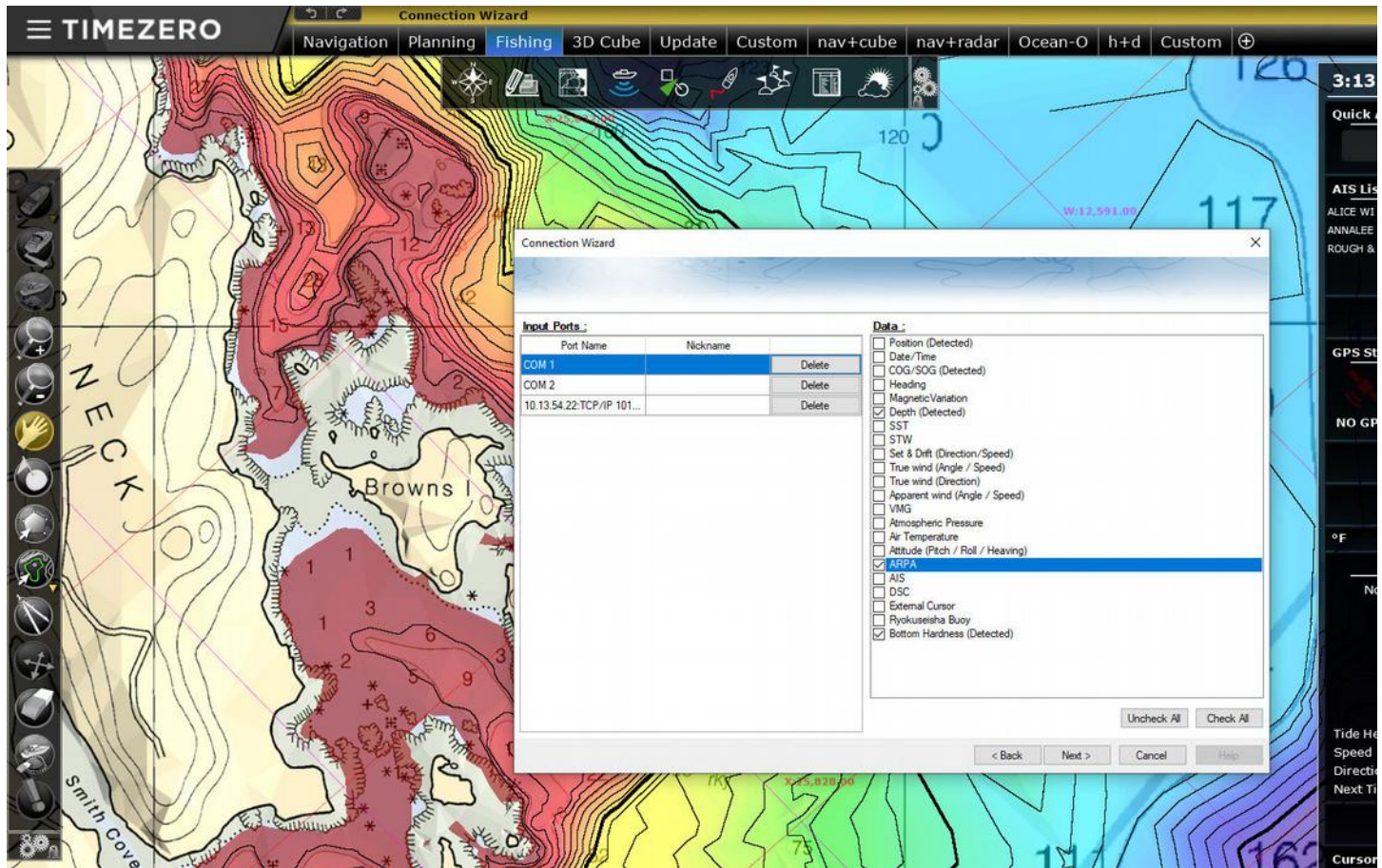
Then in the Hondex, enable the "BTM" NMEA sentence. If you wish to enable sending of marks to the TZ computer, set WPL to TZ while there. Exit the menu and restart the Hondex.



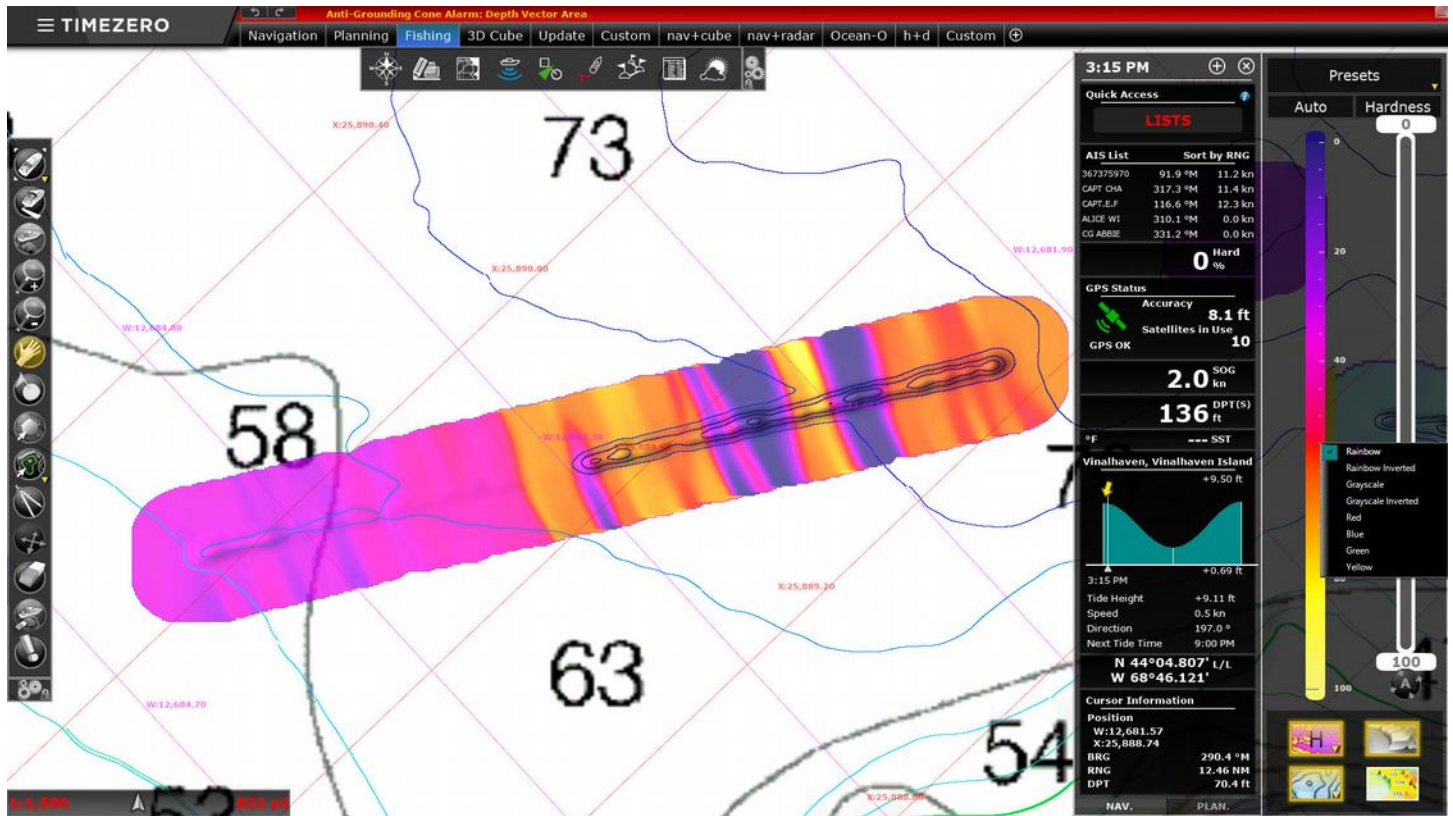
This shows the Hondex sounder adjustments to reduce power in the shallowest water.



In TimeZero Professional, edit the connection to the Hondex in connection wizard. Check off **Hardness** as shown. If you want to receive marks, also check off ARPA. If you are using the Hondex HDX121 to supply position information, check off the detected position readings. Depth should also be checked already.



When using TZ Professional, use fishing mode, right click on the Depth Shading icon in the color slider area, and select Bottom Hardness. This changes the display to bottom hardness mode and you can see the recorded colors change as the Hondex supplies changing hardness information. You can also right click on the color scale and choose a color scheme of your choosing.



For hondexne.com

Jason Philbrook
jason@rockbound.net